



RIGEL PROFILER MILITARY 9.1

FOCUS INVESTIGATION EFFORTS

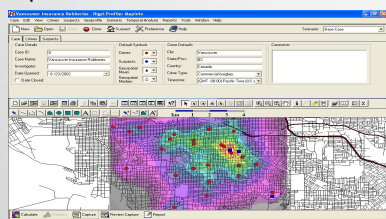
SAVE VALUABLE TIME & RESOURCES

APPREHEND SERIAL OFFENDERS FASTER

Rigel Geographic Profiling

Used by leading national and regional police and military forces worldwide, Rigel works directly with your data, GIS software and the patented CGT algorithm to provide your agency with geographic profiling capabilities.

Rigel Profiler Military is ECRI's professional geographic profiling system for military analysts. It incorporates ECRI's patented CGT algorithm, relied on by geographic profilers and Profilers worldwide to provide proven and effective geographic profiling capabilities.



Compatible & Easy to Use

Those familiar with standard Windows GIS software and office tools will feel right at home using Rigel Profiler Military. Rigel works directly with your crime data, suspect data and map data in common data formats, using a familiar Windows graphical user interface model.

The capabilities of your GIS software are fully integrated into Rigel Profiler Military's map window. If you have access to multiple GIS options, Rigel Profiler Military allows you to use any or all of them together for enhanced capabilities. GIS support includes:

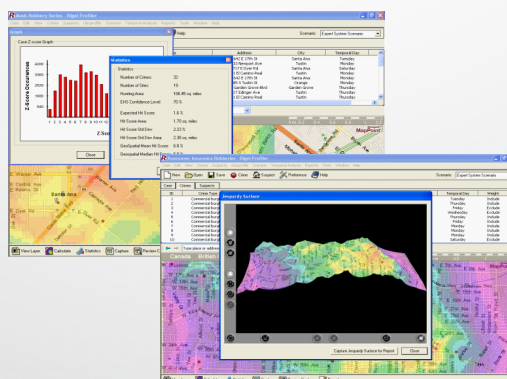
- ESRI ArcGIS
- Microsoft MapPoint
- Pitney Bowes MapInfo
- Google Maps

Detailed street maps and geocoding data included with GIS software packages such as MapPoint and online services such as Google Maps can be used directly by Rigel Profiler. Geographic profiles generated by Rigel can be exported to external GIS applications.

Geographic Profiling

Geographic Profiling is an investigative tool used to prioritize suspects and manage case information. It is used to focus investigations on likely geographic areas, and to help with prioritization of the large amounts of data used in a case, such as suspect lists, parolees, and registered sex offenders.

Accumulated experience shows that geographic profiling will, on average, locate the offender's anchor point to within 5% of the criminal's operating ground. This focused effort typically can reduce investigation time, help prevent new offences, and save money and resources.

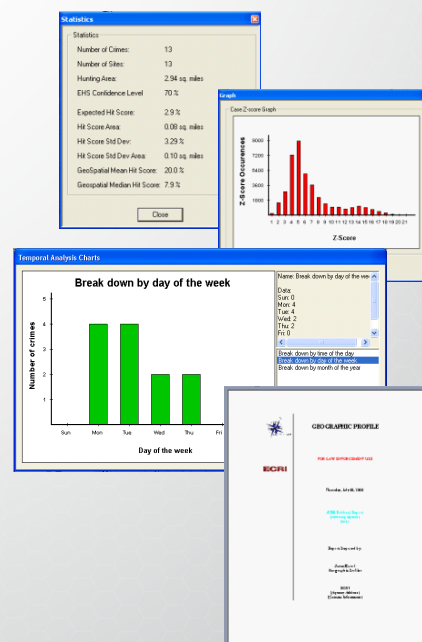


Feature Highlights

- A built-in multi-source geocoder works with existing street address information and place names.
- Interactive geocoding with instant results and automatic bulk import geocoding are both supported.
- Direct entry of crime sites and suspect information by address or map location
- Importing from existing records management systems.
- Multiple scenarios with visual and statistical comparison.
- Export system to optimize results.
- Temporal analysis tools including temporal charts, temporal data filtering, time-series animation, crime order arrows, & trend lines.
- Simple linkage analysis.

Professional Reporting

Reporting is quick and easy through the use of standard Rigel Profiler's Microsoft Word and PowerPoint templates. The report generator automatically loads crime and suspect data, as well as images into professional looking reports allowing a user more time for analysis.



System Requirements

Rigel Profiler Military will run on any Windows PC with:

- GIS software or access to internet map services.
- Microsoft Office or similar tool set for editing data and reports.

License Versions

- Standalone
- Multi-User
- Network

ENVIRONMENTAL CRIMINOLOGY RESEARCH INC.

212-1807 MARITIME MEWS • VANCOUVER • BC • CANADA • V6H 3W7

PHONE: 604.718.2060 • EMAIL: INFO@ECRICANADA.COM

